



KYLIE ELLISON

THE THERAPY & TRAINING

**COURSE
QUICK
GUIDE
2026**

 1300 424 752

 training@kylieellison.com.au

WHO WE ARE

CEO & Founder Kylie Ellison has been delivering successful clinical play therapy training programs since 2018 via Centre for Play Therapy and Play Therapy Training Australia.

In 2025 these two companies merged to create Kylie Ellison Therapy & Training.

Committed to ongoing excellence in the field of play therapy training in Australia, Kylie Ellison Therapy & Training continues to deliver its popular clinical program in the hopes of strengthening and expanding play therapy training and qualification standards for registration as a play therapist in Australia. All trainers hold mental health qualifications and registration, along with registration and experience in the field of Child Centred Play Therapy.

Kylie Ellison Therapy & Training offers training qualifications and a pathway to registration as a play therapist in Australia. Training services include introductory workshops, clinical training programs, advanced clinical workshops, Child- Parent Relationship Therapy programs, individual and monthly group clinical supervision services. All trainers hold mental health qualifications and registration, along with registration and experience in the field of Child Centred Play Therapy.

Kylie Ellison Therapy & Training will continue to uphold the highest levels of professional education in pursuit of recognition of the field of play therapy studies and career opportunities for play therapists across Australia.

"We uphold standards of excellence in delivery of clinical play therapy to provide a pathway to registration as a Play Therapist in Australia"



OUR TRAINER



Kylie Ellison **Founder, CEO & Clinical Trainer**

Kylie is a Registered Counsellor with ACA and PACFA, Registered Play Therapist and Registered Play Therapist- Supervisor who has been working with children, young people and families in the human services field for the past 20 years.

In 2015, Kylie discovered a passion for Child Centered Play Therapy as a way of working alongside children and their parents/ carers.

Subsequently, Kylie established her private practice, an organisation committed to supporting children to work through difficult feelings and experiences through the provision of Child Centred Play Therapy services.

In 2018 Kylie developed introductory and clinical workshops, to offer a professional training program and provide a pathway to registration as a play therapist for professionals in Australia.

Today Kylie works with both clients and students and is passionate about creating a community of play therapy practitioners that fosters access to training and therapy services along with advocacy for play therapy in both the community and professional arenas.

Bachelor of Arts (Psychology) (2004)

Postgraduate Diploma in Psychology (2009)

Postgraduate Certificate in Play Therapy (2015)

Advanced Clinical Training in Play Therapy (2015)

Master of Counselling and Psychotherapy, ACAP (2019)

Level 4 Registered Counsellor, Australian Counselling Association (ACA)

Registered Clinical Counsellor, PACFA

Registered Play Therapist, Play Therapy Practitioners Association (PTPA)

Rise Up Individual and Group Clinical Supervision Certificate (2023)

Registered Clinical Supervisor – ACA College of Supervisors

Registered Play Therapist – Supervisor, Play Therapy Practitioners Association (PTPA)

Registered Play Therapist – Australia Play Therapists Association (APTA)

Credentialed CCPT Practitioner – National Institute for Relationship Enhancement (NIRE, USA)

QUICK GUIDE

How to become a Play Therapist with Kylie Ellison Therapy & Training

Complete the five modules below to receive your Advanced Certificate in Child Centred Play Therapy Studies.

Module One

CCPT Professional Foundations

For anyone who is interested in Play Therapy, this workshop provides the opportunity to learn the basics skills of Child Centred Play Therapy through attendance at a one day live online tutorial.

Module Two

CCPT Components & Structure

A three-day intensive online workshop to develop students' clinical skills combined with additional readings, videos, case studies and assessment.

Module Three

CCPT Clinical Issues and Ethical Practice

A three-day intensive online workshop that delves into issues, typical problems, legal and ethical guidelines in practice combined with additional readings, videos, case studies and assessment.

Module Four

CCPT Advanced Skill Work

A three-day intensive online workshop providing clinical observations of practice including completion of skills combined with a additional readings, videos, case studies and assessment.

Module Five

CCPT Extensions Beyond the Playroom

A three-day intensive online workshop deepening the skills and knowledge of play therapy with case studies, scenarios and practices.

Assessment

Group Supervision / Placement / Assessment

Group supervision and placement requirements facilitated within workshops as well as three online quizzes and one video assessment of a client session.

CCPT PROFESSIONAL FOUNDATIONS



This introductory module provides an overview of the clinical skills required to engage in child centred play therapy with clients. In a full one-day online workshop, participants will learn and practice content presented live online.

The following topics are covered in the this workshop:

- History and benefits of play- the meaning of play for children
- Theory of play therapy
- Key concepts of child centred play therapy
- Characteristics of the play therapist
- The play room and materials
- Beginning therapy: The importance of the relationship with the child
- Basic skills introduction: Characteristics of facilitative responses and therapeutic limit setting

Pre-Requisites:

NIL

We encourage anyone who is intersted in Play Therapy to undertake our
Module One - CCPT Professional Foundations

CCPT PROFESSIONAL FOUNDATIONS

All content, resources, practices and assessments will be presented and conducted within the one-day workshop.

During the enrolment process on our website you will be asked to select a workshop date. Spaces are capped so please enrol early to avoid missing out on your preferred date.

Delivery:
14 Hours Total

7 Hours face to face
online workshop
delivered over one day.

7 Hours self paced learning, online
readings and articles.

Workshop will run from
8:30am - 4:30pm (QLD Time).





The objective of this training is to equip those with a relevant undergraduate degree to obtain further training in the area of child centred play therapy in order to apply this knowledge and skill to clinical practice.

Our vision for providing child-centred play therapy training in our local communities is to ensure practitioners are equipped to provide quality play therapy services to children across Australia.

The clinical program consists of four workshops with attendance required at eleven individual days of training presented online.

Our training program is recognised in full by the Play Therapy Practitioners Association and partially recognised by the Australian Play Therapists Association.

For further information on membership requirements please see the relevant association website.

Pre-Requisites:

Participants must have completed Workshop One - Introduction to Play Therapy

Participants must hold a bachelor degree in Social Work, Human Services, Early Childhood Education, Counselling, Psychology or similar.

MODULE TWO

CCPT Components & Structure

Topics Covered:

Day One

Countertransference & Transference
in the Playroom
Trauma & Attachment
Skill Revision: tracking, reflecting
content, reflecting feelings

Day Two

Stages and Themes of Play Therapy
Parents/Guardians as Partners in Play
Therapy
Skill Revision: Limit Setting

Day Three

Child Development Theory
Goal Setting/Treatment Planning
Case Noting/Report Writing
Skill Revision: Facilitative Responses

Delivery:

62 Hours Total

24 Hours face to face
online workshops
delivered over three days

38 Hours self paced learning
textbook readings and workbook

Workshops run from
8:30am to 5:30pm (QLD Time)

Required Reading:

Landreth, G. (2023). Play therapy: The art of the relationship. Routledge: London, 4th edition. Chapters 8, 9, 12, 13, 14

Cochran, Nancy, H. et al. Child-Centered Play Therapy. Available from: VitalSource Bookshelf, (2nd Edition). Taylor & Francis, 2022. Chapter 11, 12, 13



"TOYS ARE CHILDREN'S
WORDS AND PLAY IS
THEIR LANGUAGE"
- DR. GARY LANDRETH

MODULE THREE

CCPT Clinical Issues & Ethical Practice

Topics Covered:

Day One

Typical problems & challenges in the playroom

Working with children who have experienced DV - Jodi Mullen

Skill Revision: facilitative responses

Day Two

Legal & Ethical issues in PT practice

Working with culturally diverse clients

Skill Development: making meaning of the play

Day Three

Working with Autistic children

Autism/ADHD & Trauma

Working with children who have been interpersonally traumatised

Skill Revision: limit setting & reflecting feelings



Delivery:

62 Hours Total

24 Hours face to face
online workshops
delivered over three days

38 Hours self paced learning
textbook readings and workbook

Workshops run from
8:30am to 5:30pm (QLD Time)

Required Reading:

Landreth, G. (2023). Play therapy: The art of the relationship. Routledge: London, 4th edition, Chapters 6, 12, 15, 16

Cochran, Nancy, H. et al. Child-Centered Play Therapy. Available from: VitalSource Bookshelf, (2nd Edition). Taylor & Francis, 2022. Chapters 16, 17, 18

Landreth, G. (2001). Innovations in play therapy: Issues, process and special populations. Routledge: London, UK.- Chapter 9, 10, 16

**"PLAY IS A CHILD'S WORK...
THIS IS NOT A TRIVIAL PURSUIT"
~ALFRED ADLER**

MODULE FOUR

CCPT Advanced Skill Work

Topics Covered:

Day One

Determining the end of therapy
Introduction to intensive child-centred play therapy, plus Teleplay therapy
Skill Revision: tracking, reflecting feelings, reflecting content

Day Two

Play Therapy in the school setting
Play Therapy across the lifespan- tweens, teens and adults

Day Three

Sibling Play Therapy
Filial Therapy
Starting a private practice
Final skills practice with feedback

Delivery:

62 Hours Total

24 Hours face to face
online workshops
delivered over three days

38 Hours self paced learning
textbook readings and workbook

Workshop run from
8:30am to 5:30pm (QLD Time)

Required Reading:

Landreth, G. (2012). Play therapy: The art of the relationship. Routledge: London, UK.- Chapter 15, 16

Cochran, N. H., Nordling, W. J., & Cochran, J. L. (2010). Child- centred play therapy: A practical guide to developing therapeutic relationships with children. John Wiley & Sons Inc: New York, USA.- Chapter 13

Landreth, G. (2001). Innovations in play therapy: Issues, process and special populations. Routledge: London, UK.- Chapter 12, 13, 21, 22

Landreth, G. L., & Bratton, S. C. (2006). Child parent relationship therapy (CPRT): A 10- session filial therapy model. Routledge: London, UK.- Chapter 1, 4, 5, 7- 16



**"NO SIGNIFICANT LEARNING
OCCURS WITHOUT A SIGNIFICANT
RELATIONSHIP." ~JAMES COMER**

MODULE FIVE

CCPT Extensions: Beyond the Playroom

Topics Covered:

Day One

The personhood of the therapist
Deepening making meaning of play
Skills Practice: Making Meaning of the Play

Day Two

Unpacking Psychodynamic
Psychotherapy
Documentation in play therapy
Skills Practice

Day Three

Extending knowledge of themes
Establishing Private Practice: Follow
up questions and support

Delivery:

24 Hours Total

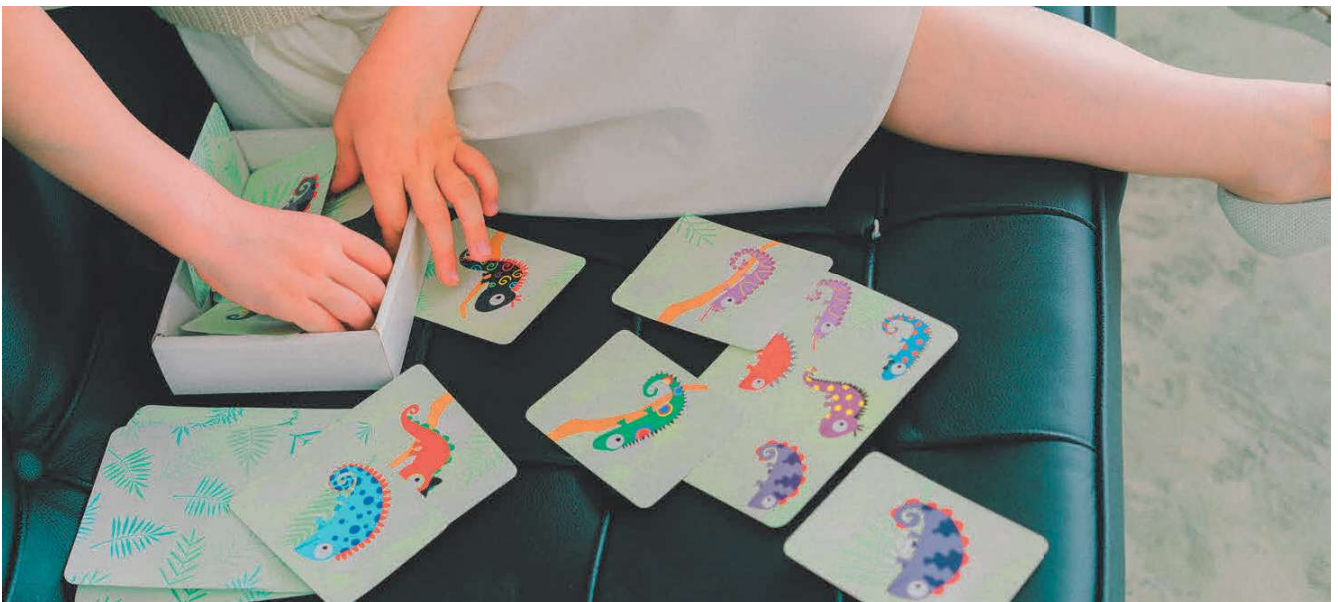
24 Hours face to face
online workshops
delivered over three days

Workshop run from
8:30am to 5:30pm (QLD Time)

Required Reading:

NIL

"ENTER INTO CHILDREN'S PLAY, AND YOU WILL FIND THE PLACE WHERE THEIR MINDS, HEARTS, AND SOULS MEET" - VIRGINIA AXLINE



ASSESSMENT ONE

Online Quiz



For Workshops Two, Three and Four students will be required to complete an online quiz that directly relates to the material covered in the assigned readings and the intensive workshop. The quiz is designed to reinforce key concepts and ensure students have developed a solid understanding of the core content presented throughout the course.

The assessment will consist of multiple-choice questions that test comprehension and application of the workshop topics. To successfully complete this component, students must achieve a minimum pass mark of 90%. This high standard ensures that participants have thoroughly engaged with the material and are prepared to apply their knowledge in practice.

The quiz can be accessed through the online student portal. Students are encouraged to log in ahead of time to familiarise themselves with the system and ensure they have reliable internet access before starting the quiz.

ASSESSMENT TWO

Placement & Supervision

This placement provides an experiential learning opportunity for students studying Child-Centred Play Therapy (CCPT). It enables students to practise and refine their core therapeutic skills in a structured, ethical, and supportive environment, bridging theory and practice through direct application.

Each student will work in pairs with a fellow student to practise designated play therapy skills. This collaborative approach encourages peer learning, constructive feedback, and the development of confidence in implementing therapeutic techniques within a safe and supervised setting.

Throughout the placement, students will participate in five (5) structured practice sessions that align with course workshops. Following each session, they are required to complete a self-reflection exercise to evaluate their learning, identify areas for growth, and consolidate their understanding of CCPT principles.

Students will also receive educational supervision during each workshop, totalling six hours across the clinical program. In addition, each student will be provided with one hour of individual consultation at the completion of the program to receive detailed feedback on their video assessment. This supervision and feedback process supports ongoing professional growth and ensures the development of competent and reflective practitioners.



ASSESSMENT THREE

Video



The final component of passing the course will be to complete and record a play therapy session with a child aged 2-12 years. The session recording will be submitted via our confidential dropbox platform and you will receive feedback as per the below marking criteria.

The assessment is marked satisfactory/unsatisfactory on the basis of the practical implementation of and competency in the CCPT skills taught throughout the course.

Recordings can be done via iPad, laptop, or alternate technology, either using the camera function or by creating a zoom link for yourself and recording via the zoom recording function.

Sessions will remain confidential and will be observed only by the allocated trainer and/or marker.

In the event of an unsatisfactory submission, you will be given the opportunity to resubmit a new recording and are encouraged to engage in further study and practice in the area(s) highlighted in the marking criteria prior to doing so.

Session Length: 40 minutes

Due Date: last day of Workshop Five

ASSESSMENT

Summary

Workshop Two - Quiz

Complete the online quiz based on the readings and content delivered in Workshop Two.

Workshop Three - Quiz

Complete the online quiz based on the readings and content delivered in Workshop Three.

Workshop Four - Quiz

Complete the online quiz based on the readings and content delivered in Workshop Four

Placement

Conduct practice of play therapy sessions in a student pair (facilitated within workshops).

Video Assessment

Record one (1) play therapy session with a child aged 2-12 years and submit with written reflection for feedback and assessment.

Educational Supervision

Educational group supervision will also be delivered within the workshops. A one (1) hour individual consultation on the video assessment will be conducted after program completion.



Graduate Outcomes

Graduates will receive an Advanced Certificate in Play Therapy Studies totalling 224 hours of Clinical Training including 103 contact hours and 121 non contact hours as well as 6 hours of supervision upon completion of all five workshops.

Kylie Ellison Therapy and Training's clinical training program is recognised in full by the Play Therapy Practitioners Association (PTPA) and is a pathway to gaining membership as a Registered Play Therapist.

Kylie Ellison Therapy and Training cannot guarantee that completing this training program will result in graduates meeting all other requirements for registration with each association. It is your responsibility to ensure you meet all eligibility criteria and requirements set out by your chosen registration body (i.e., APTA, APPTA, PTPA).

We would love to connect with you so if you have any further questions please feel free to contact us through one of the methods below: -

PHONE

1300 424 752

EMAIL

training@kylieellison.com.au

WEBSITE

www.kylieellison.com.au